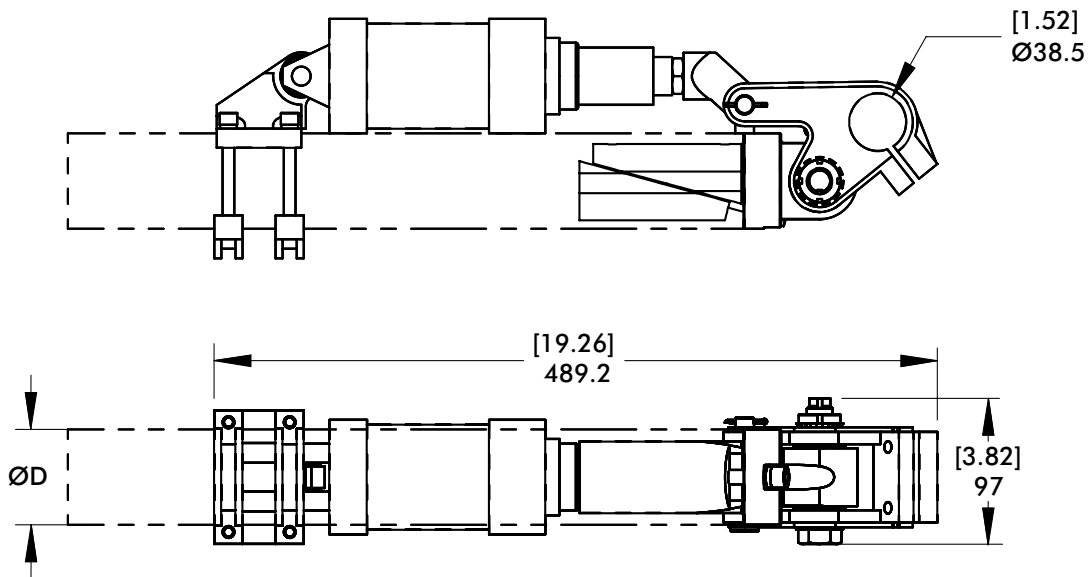
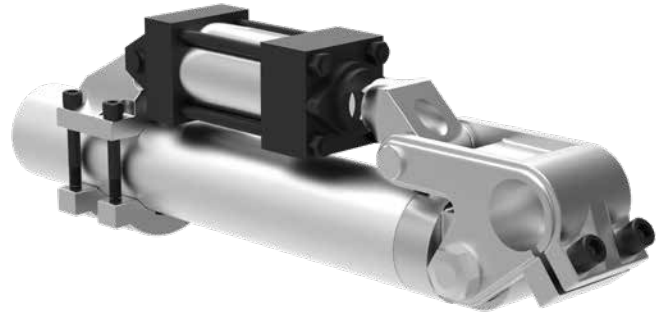


WRIST ROTATE ASSEMBLY

Round Tooling | Dimensions | Technical Specifications

Features:

- These self-contained tip units are designed for use with dual-axis loaders and unloaders.
- The amount of rotation can be adjusted with the use of a cylinder stop tube.
- The unique wedge-lock uses frictional force to secure the unit within the tubing.
(U.S. Patent No. 5,411,232)
- * Rotation is controlled by adjusting the length of a stop tube and limiting the stroke of the cylinder
- A rod extension is used to move the cylinder away from the rotate point. To order the rod extension separately, the part number is CPI-CRE-10-[Length]



Model Number	ØD	Weight
CPI-WRWM-45	60mm	[8.5 lb] 3.9 kg
CPI-WRWM-90	60mm	[10.5 lb] 4.8 kg



**Base Model
WRWM**
Wrist Rotate
Assembly
(Metric Version)

Rotation

45 0° - 45°
90 0° - 90°

Cylinder Bore

00 No Cylinder Provided
50 50 mm
60 60 mm

Model Number	ØD	Weight
CPI-WRW-45	2.50 in	[8.5 lb] 3.9 kg
CPI-WRW-90	2.50 in	[10.5 lb] 4.8 kg



**Base Model
WRW**
Wrist Rotate
Assembly

Rotation

45 0° - 45°
90 0° - 90°

Cylinder Bore

00 No Cylinder Provided
20 2.00"
25 2.50"